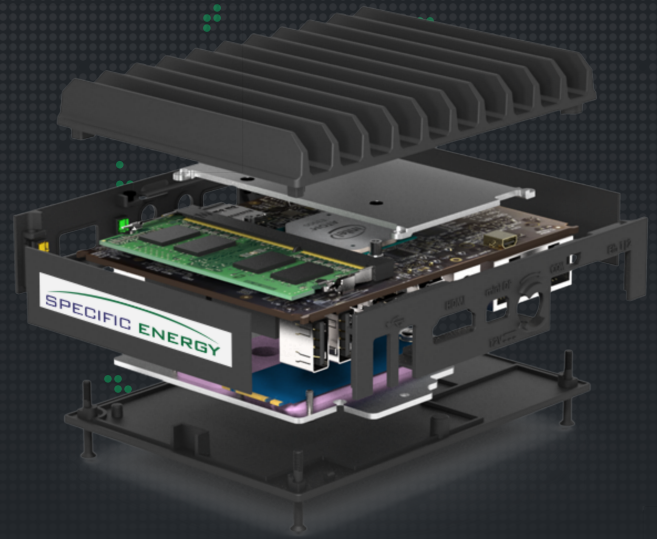
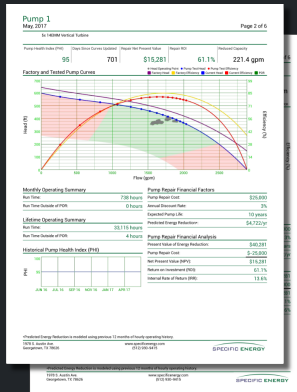


Dynamic Pump Optimizer SAVE TIME. SAVE ENERGY. SAVE YOUR PUMPS.



MONTHLY REPORTING Health at a glance.

Automatically receive a monthly snapshot of pump health, operating summary, energy usage, and the net present value of repairs to make informed maintenance decisions backed by financial metrics.



PEAK ENERGY EFFICIENCY Engineered for efficiency.

Maximize efficiency by selecting the optimal combination of pumps and speeds to maintain level or pressure with a variety of constraints.

13.5%
Average Energy Reduction



EXTENDED PUMP LIFE Complete protection.

The DPO monitors changes in pump health and maintains accurate pump curves to keep pumps running in their sweet spots making them last dramatically longer.

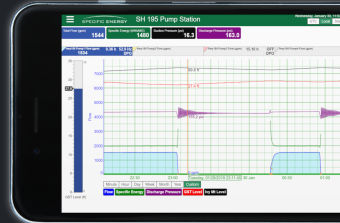
5.3x
Average Extended Pump Life



REDUCE LEAKS A comfortable ride.

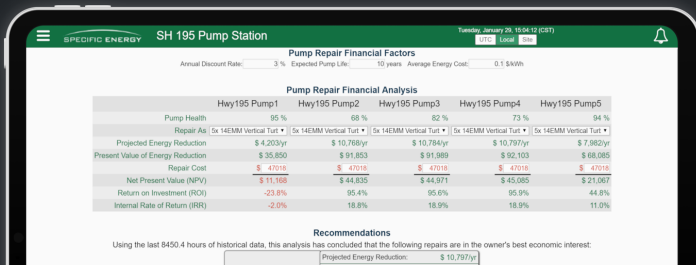
The DPO virtually eliminates pressure transients by gracefully transitioning pumps during stops, starts, and speed changes.

70%
Average Reduction of Peak Transients

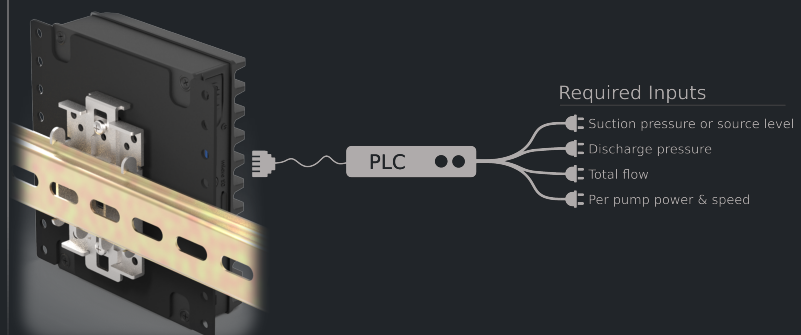


PREDICTIVE ASSET MANAGEMENT Make every repair count.

The DPO identifies worn pumps and makes repair recommendations as soon as the net present value of a repair becomes positive.



Ease of installation.



INCLUDED COMPONENTS

- NEMA Indoor/Outdoor 1, 2, 4, 4x, 12 enclosure: 15.75" x 15.75" x 7.87" or may be integrated into customer control panel
- Temperature rating: 0°C to 70°C
- Required power: 120VAC, 4.5 - 9W

COMMUNICATIONS

- Supports communication with PLCs and VFDs using standard protocols including Modbus serial, Modbus TCP, EtherNet/IP, and USS
- Cellular telemetry
- Supports communication with devices using RS-232, RS-485, and Ethernet as master or slave
- Integrates with existing SCADA systems using Modbus

REQUIRED INSTRUMENTATION

- Common suction pressure or source level
- Common discharge pressure
- Station flow
- Per pump power
- Per pump speed

INSTALLATION PROCESS

- DPO is installed at pump station near PLC
- One DPO required per station
- DPO connects to Specific Energy Servers
- Operators use web-based interface to monitor current pump station status

SUPPORT & SERVICE

- Unlimited support during regular business hours during service contract term
- Configurable, automatic text message alarms with available alarm history
- Secure, web-based user interface
- Free automatic software upgrades
- Unlimited data logging
- Data stored locally and backed up at servers in a HITRUST-certified facility
- Any data set can be instantly exported at 1 second resolution to .CSV file

CONTROL SYSTEM

- High performance monitoring of pump station behavior to track pump health and support preventative maintenance decisions
- Web-based HOA for remote pump control and monitoring
- All monitoring and configuration parameters accessible via Modbus
- Alarms can be configured on all monitored signals
- Operating Modes
 - Advisory - operators use interface to determine optimal combinations of pumps and speeds
 - Automatic - PLC receives recommendations from the DPO



Secure Authentication

Strong password enforcement
Two-factor authentication
Passwords securely stored as SHA-256 hashes



Monitoring and Updating

We follow the NIST Cybersecurity Framework
Access logging and monitoring
Regular security audits
Devices receive the latest security updates



Data Protection

Stored in a HIPAA certified facility
Secure access over an encrypted connection
Redundant backups



Defense

Strict firewalls on all devices
Device protection with encrypted RSA-2048 public/private key pairs
Exclusive use of encrypted protocols



1-512-930-9415



info@specificenergy.com



1978 South Austin Ave
Georgetown, TX 78626