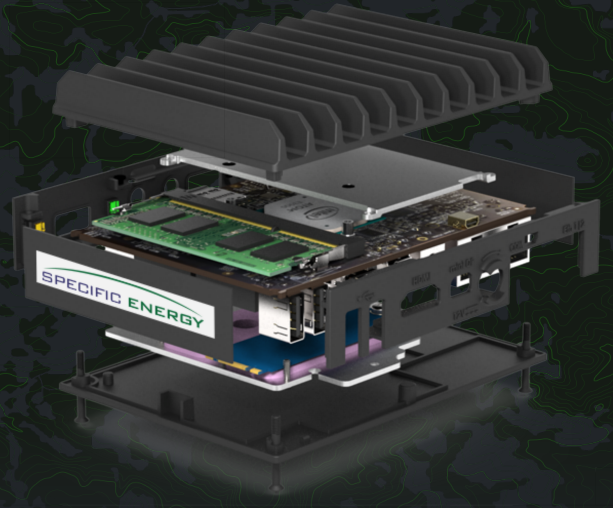


tagger^{cc}

Cellular Modbus
communication made easy.



CELLULAR CONNECTIVITY The cellular experience.

- Unparalleled uptime
- Redundant cell towers
- Fast data transmission
- Future proof industrial communication



DATA HANDLING Seamless data handling.

- High resolution data
- Easily export data
- Data backups & cloud storage



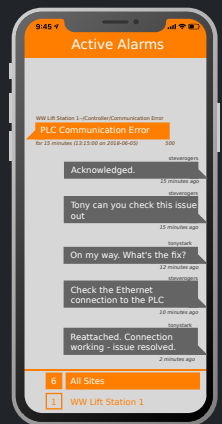
WEB-BASED DATA VIEWER Complete insight.

- Securely view your data anywhere
- Mobile & Desktop access
- Unlimited users
- Automatic software upgrades



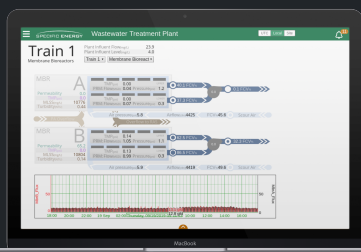
ALARM & EVENT ENGINE Get notified.

- Configure and customize alarms
- SMS & Email Alarms
- Filter nuisance alarms



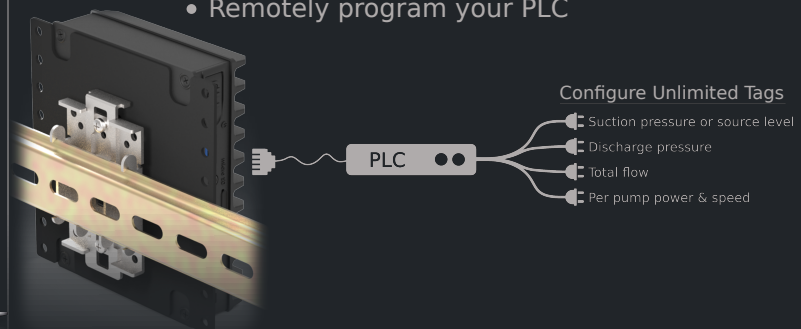
CLOUD SCADA Next generation SCADA.

- Entirely cloud based platform
- Create custom dashboards
- Automate processes with Python scripting
- Powerful analytics engine
- Custom reports



Ease of installation.

- Remotely program your PLC



	TAGGER STARTER	TAGGER PLUS	TAGGER UNLIMITED
UNLIMITED CELLULAR DATA PLAN	✓	✓	✓
UNLIMITED USERS	✓	✓	✓
UNLIMITED TAGS	✓	✓	✓
WEB-BASED DATA VIEWER	✓	✓	✓
MODIFY SETPOINTS	✓	✓	✓
CONFIGURE ALARMS		✓	✓
RECEIVE EMAIL/SMS ALARMS		✓	✓
REMOTE PLC PROGRAMMING MODULE		✓	✓
DATA EXPORT MODULE		✓	✓
UNLIMITED CLOUD BACKUP		✓	✓
DASHBOARD CREATION MODULE		✓	✓
CUSTOM REPORTING			✓
PYTHON AUTOMATION MODULE*			
ANALYTICS ENGINE			✓
HARDWARE UPGRADES	✓	✓	✓
SOFTWARE UPGRADES	✓	✓	✓
AUTOMATIC SECURITY PATCHES	✓	✓	✓
UNLIMITED TECHNICAL SUPPORT	✓	✓	✓

* Available in future release



Data Protection

Stored in a HIPAA certified facility
Secure access over an encrypted connection
Redundant backups



Defense

Strict firewalls on all devices
Device protection with encrypted RSA-2048
public/private key pairs
Exclusive use of encrypted protocols



Secure Authentication

Strong password enforcement
Two-factor authentication
Passwords securely stored as SHA-256 hashes



Monitoring and Updating

We follow the NIST Cybersecurity Framework
Access logging and monitoring
Regular security audits
Devices receive the latest security updates

INCLUDED COMPONENTS

- Industrial PC (2GB RAM, Intel Atom CPU, 125 GB SSD)
- Temperature rating: 0°C to 70°C
- Required power: 120VAC, 4.5 - 9W
- DIN rail mountable
- Antenna with magnetic base
- 10' coax antenna cable

COMMUNICATIONS

- Supports communication with PLCs using standard protocols including Modbus serial, Modbus TCP, EtherNet/IP, and USS
- Cellular telemetry
- Supports communication with devices using RS-232, RS-485, and Ethernet as master or slave
- Integrates with existing SCADA systems using Modbus



1-512-930-9415



info@specificeenergy.com



1978 South Austin Ave
Georgetown, TX 78626