



**SPECIFIC
ENERGY**

Tagger



Secure SCADA without limits,
in the palm of your hand.



SCADA: Evolved & Engineered Cloud SCADA



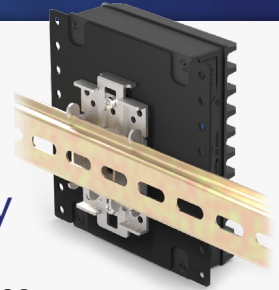
- Entirely cloud based platform
- Create custom dashboards
- Out-of-the-box HMI Dashboards
- Powerful analytics engine
- Custom reports

PLC

Plug and play

Steps to install:

1. Din-rail mount device
2. Plug in power
3. Plug in communication cable
4. Mount magnetic antenna



Complete insight Web-Based Platform



- Automatic Software Upgrades
- Unlimited users
- Secure Authentication
- End-to-end encryption

Get notified

Alarm & event engine



- Get the right alarm to the right personnel at the right time
- Configure and customize alarms
- SMS and Email alarms
- Filter nuisance alarms

Unlimited data Managed Cellular Communication



- Unparalleled uptime
- Fast data transmission
- Future proof

Seamless Data Handling



- High resolution data
- Easily export data
- Automatic backups and cloud storage

	TAGGER STARTER	TAGGER PLUS	TAGGER UNLIMITED
UNLIMITED CELLULAR DATA PLAN	✓	✓	✓
UNLIMITED USERS	✓	✓	✓
UNLIMITED TAGS	✓	✓	✓
WEB-BASED DATA VIEWER	✓	✓	✓
MODIFY SETPOINTS	✓	✓	✓
HARDWARE UPGRADES	✓	✓	✓
SOFTWARE UPGRADES	✓	✓	✓
AUTOMATIC SECURITY PATCHES	✓	✓	✓
END-TO-END ENCRYPTION	✓	✓	✓
UNLIMITED TECHNICAL SUPPORT	✓	✓	✓
CONFIGURE ALARMS		✓	✓
RECEIVE EMAIL/SMS ALARMS		✓	✓
REMOTE PLC PROGRAMMING MODULE		✓	✓
DATA EXPORT MODULE		✓	✓
UNLIMITED CLOUD BACKUP		✓	✓
DASHBOARD CREATION MODULE		✓	✓
INTER-TAGGER TELEMTRY		✓	✓
CUSTOM REPORTING			✓
CUSTOM CONTROL MODULE			✓

Included components

- Industrial PC (2GB RAM, Intel CPU, 64GB SSD)
- Temperature rating: 0°C to 70°C
- Required power: 120VAC, 4.5A or 12-32VDC
- DIN rail mountable
- Antenna with magnetic base
- Coax antenna cable

Communications

- Supports industrial devices using standard protocols including Modbus serial, Modbus TCP, EtherNet/IP, and DFI and more
- Supports with devices using RS-232, RS-485, and Ethernet
- Integrates with existing SCADA systems

Support & Service

- Unlimited support in business hours in service contract term
- Configurable, automatic text message alarms with alarm history
- Secure, web-based user interface
- Free automatic software upgrades
- Unlimited data logging
- Data stored locally and backed up at servers in a HITRUST-certified facility
- Data is easily exported at up to 1 second resolution to .CSV file.

✓ Secure Authentication

Strong password enforcement
Two-factor authentication
Passwords securely stored as SHA-256 hashes
Passkeys supported

✓ Monitoring and Updating

We follow the NIST Cybersecurity Framework
Access logging and monitoring
Regular security audits
Devices automatically receive the latest security update

✓ Data Protection

Specific Energy uses the Google Kubernetes Engine environment for data storage and protection. This is a multi-layered, redundant environment focusing on secure configuration, access controls, and vulnerability scanning to protect data.

✓ Defense

Strict firewalls on all devices
Device protection with encrypted RSA-2048 public/private key pairs
Exclusive use of encrypted protocols

